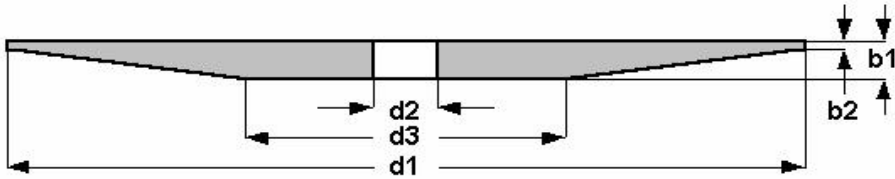
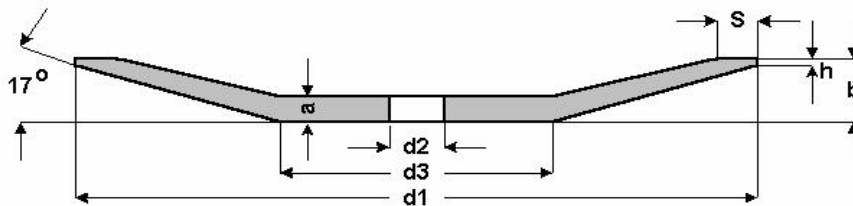


DIN 69146 Form A



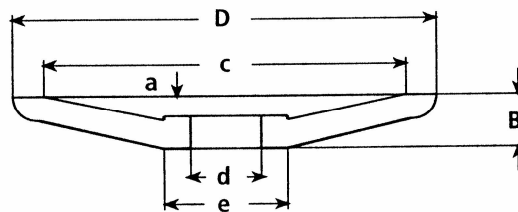
	d 1	b 1	d 2	b 2	d 3
A80	80	5	13 (20)	1	40 (30)
A100	100	6	20	1,5	50
A125	125	7	32 (20)	2	63 (68)
A150	150	8	32 (20)	2	75 (82)
A175	175	10	20	3	85 (95)
A200	200	13 (12)	32	3	100 (95)
A250	250	14	32	3	125

DIN 69149 Form B



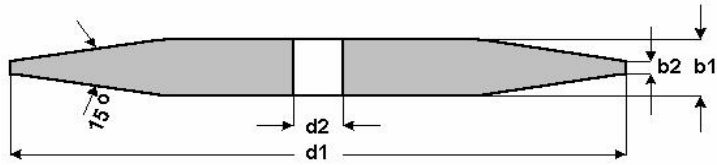
d 1	b	d 2	a	h	s	d 3 = d 4
80	10 (8)	13 (20)	6	2,5 (2)	4	31 (30)
100	13 (12)	20	7	3,2 (3)	5 (6)	36 (35)
125	13 (14)	32 (20)	7	3,2 (3)	6	61 (40)
150	16 (15)	32 (20)	9 (10)	3,2 (3)	8 (7)	66 (50)
175	18	20	11	3	8	60
200	20 (19)	32	12	3,2 (3)	10	90 (70)
250	21	32	14	3	12	100

DIN 69149 Form BH



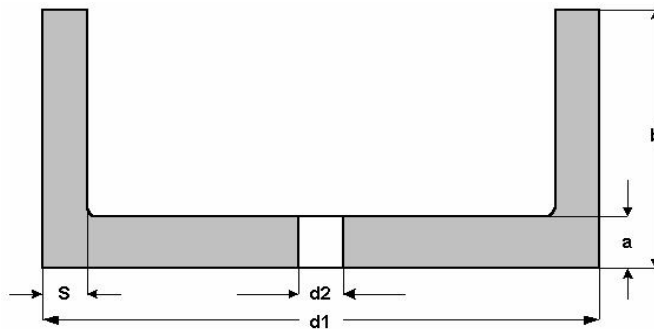
	d 1	b 1	d 2	b 2	d 3	e 3
BH200	200	25	32	13	184	60

DIN 69147 Form C



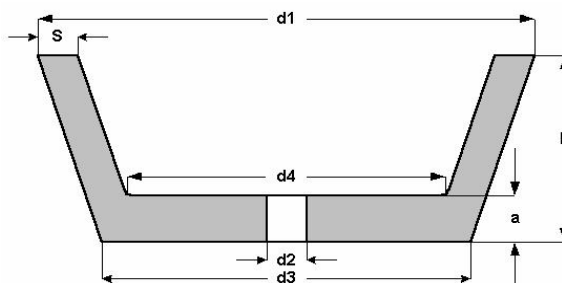
	d 1	b 1	d 2	b 2
C80	80	8	13 (20)	2
C100	100	9	20	2
C125	125	10	32 (20)	2
C150	150	12	32 (20)	2
C175	175	14	32 (20)	3
C200	200	16	32	3
C250	250	19	32	4

DIN 69139 Form D



	d 1	b	d 2	s	a
D50	50	32	13	5 (3)	8 (6)
D80	80	40	13 (20)	6 (4)	10 (8)
D100	100	50	20	8 (5)	10
D125	125	63	32 (20)	8 (7' 5)	13 (12)
D150	150	80	32 (20)	10	16

DIN 69148 Form E



d 1	b	d 2	d 3	d 4	a	s
50	32 (25)	13	27 (32)	22 (25)	8 (6)	4
80	32	13 (20)	57 (55)	46 (48)	8	6 (5)
100	40 (35)	20	71 (75)	56 (65)	10	8 (6)
125	40 (45)	32 (20)	96 (92)	81 (80)	10 (12)	8 (7)
150	50	32 (20)	114	96 (100)	13 (12)	10 (7)